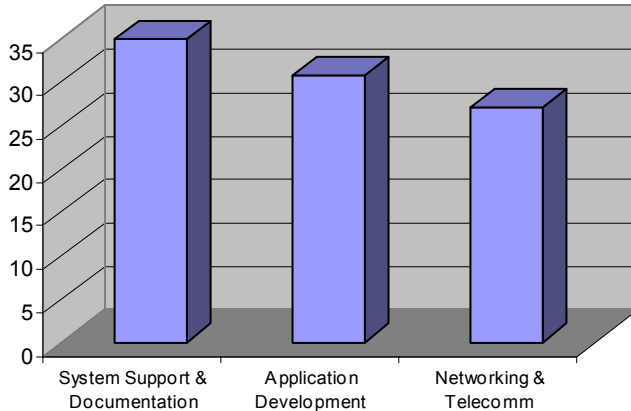
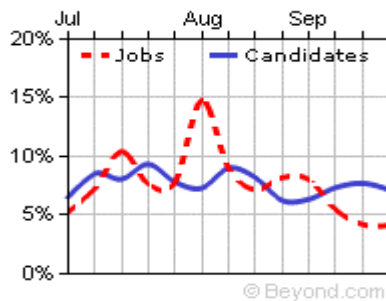


Top Candidate Sectors – Percentage of Industry Information Technology



Information Technology Employment Trends (Percentage of Network – July 2006 to September 2006)



IT Employment Forecast

(Source: Bureau of Labor Statistics: Occupational Outlook Handbook, 2006-2007)

- Employment of computer software engineers is expected to grow by more than 26% through 2014 as businesses and other organizations adopt and integrate new technologies and seek to maximize the efficiency of their computer systems.
- As the information technology sector begins to mature and routine work is increasingly outsourced overseas, employment will grow at a slower pace than in the previous decade.

You can effectively reach this market. Here is how we can help.

The Beyond.com Network is comprised of more than 11,000 general, local and niche-industry web sites that together have the power to reach more than **25 million business professional contacts** through its network community, with thousands of new members added each day. A complete listing of the Beyond.com Network sites can be found at: www.Beyond.com/Network.

The Information Technology Delivery Channel captures and delivers information tailored to meet the individual needs and goals of the Information Technology professional and corporate organization. In addition to searching for a new job, candidate, or IT-related resource materials, Beyond.com can help create a customized recruitment, marketing or advertising campaign that will effectively reach your company's targeted audience.

Branding and advertising opportunities include:

- Job Posting Packages
- E-Mail Marketing and Sponsorships
- Corporate Branding
- Corporate Spotlights
- Alerts and Keyword Purchases

Network Statistics	
Monthly Visitors	> 3 million
Page Views	20 million
IT Statistics	
Resumes	848K
Job Postings	163K
Channel Sites	274
Contacts	1.67 million

Top 10 Candidate Positions (%)
1. Computer Programmer (9.40)
2. Help Desk Specialist (8.69)
3. Network Administrator (7.43)
4. System Administrator (6.79)
5. Computer Operator (6.74)
6. Software Engineer (6.13)
7. Business Analyst (4.59)
8. Network Installer (4.48)
9. Web Developer (4.44)
10. Network Engineer (4.41)

Top 5 Cities with Open Positions
1. New York, NY
2. San Jose, CA
3. Washington D.C.
4. Sunnyvale, CA
5. Boston, MA

Information Technology 3QT06 Industry Outlook

The Beyond.com Network

By using the power of the Beyond.com Network, your company can be as broad or as specific as necessary in its search to target the critical audience to maximize the value of your recruiting, marketing or advertising campaign. You can target national, regional, state, city, specialty or industry-specific areas. Located below are a few listings of top cities, key word searches and web sites that should be considered:

Top 10 States for Candidate Registrations (%)
1. California (10.95)
2. Texas (8.63)
3. New York (7.40)
4. Pennsylvania (6.33)
5. New Jersey (6.01)
6. Georgia (5.70)
7. Florida (5.28)
8. Illinois (4.88)
9. North Carolina (3.77)
10. Virginia (3.67)

Top Information Technology Key Words Searched by Candidates:
Director, Manager, Cobol, Java, Computer, Network, Project Manager, Programmer, Computer Programmer and Software

City Sites

PhillyJobs.com	ManhattanJobs.com	SeattleJobs.com
BaltimoreJobsite.com	PittsburghJobs.com	PhoenixJobs.com
BostonJobsite.com	AlbanyJobsite.com	ChicagoJob.net

Industry Sites

ITworld.com	LookTech.com	SoftwareJobs.com
Tek-Tips.com	Techlinks100.com	WebXpertz.com
ComputerJobsite.com	Tech-Forums.net	ITHeadHunter.net

Key Information Technology Demographics

In addition to the extensive reach of the Beyond.com Network, it is also important to understand key demographics for the Information Technology Delivery Channel such as years of experience, educational background, length of job search and candidate personality traits. As you can see, 62.55% of our network candidates have a 4 year college degree or higher, 38.54% have 10 or more years experience and almost 54% of candidates have chosen the Beyond.com Network within the first 2 weeks of their job search. This translates into a significant opportunity for your company to tap into a highly-talented, knowledgeable and fresh candidate pool.

Experience Level	%
Less than 1 year	12.31
1-3 Years	15.31
3-5 Years	11.57
5-10 Years	22.24
10-15 Years	14.54
15-20 Years	12.25
21+ Years	11.75

Educational Background	%
Post Graduate Degree	16.32
4 Year College Degree	46.23
2 Year College Degree	13.65
Some College	17.21
High School Diploma	6.59

Length of Job Search	%
Just Started	42.83
2 Weeks	11.04
4 Weeks	9.62
6 Weeks	5.25
2 Months	7.17
3 Months	6.85
6 Months	5.55
9 Months	1.72
12 Months	1.21
Over 1 Year	8.76

Channel Personality Type: INTJ (Introvert, Intuitive, Thinker, Judger) INTJ traits include: autonomous, aloof, intellectual, imaginative, innovative, unique, critical, analytical, logical, intellectually curious, organized, definitive, driven to learn and increase their competence and knowledge and socially cautious and reserved.

Start with Us...

Beyond.com will help maximize your campaign today. Contact us now at LPSales@Beyond.com or by dialing 1-866-694-5627. Together we will help you Go Beyond!